

# Webinar 3:

## Integrating Labour Market Information into Literacy Service Planning

---

January 20, 2022, 2:00 pm – 3:30 pm

Facilitated by: Gay Douglas

Featuring: Jennine Agnew-Kata, Doug Noyes and Tamara Kaattari





# Land Acknowledgement

# Welcome

- **Partners**
- Coalition Ontarienne De Formation Des Adultes
- Contact North
- Literacy Network of Durham Region
- Literacy Northwest
- Literacy Link Niagara
- Literacy Link South Central
- Rideau Ottawa Valley Learning Network



# Introducing Today's Speakers

Gay Douglas – Facilitator

Panelists:

- Jennine Agnew-Kata (LiNDR)
- Doug Noyes (LLEO)
- Tamara Kaattari (LLSC)



# Audience

- Workforce Planning and Development Boards
- Regional Literacy Networks
- Anyone with an interest in Labour Market Information (LMI) and Literacy Service Planning!



# Defining Labour Market Information

## Labour Market Information:

is any information that assists people from various walks of life in making informed decisions about the labour market. LMI on occupations or industry, for example, can help you make important decisions about study and training, your first job, or the next step in your career.

Having quality and timely LMI also allows us to prepare for the economy of tomorrow, by ensuring the right people are available for future work and also by encouraging the development of new skills which can take our economy in new, productive directions.

The best LMI provides us with information to make positive labour market changes which benefit everybody.

*Source: <https://www.gov.nl.ca/labourmarketinformation/what-is-lmi/>*

# Defining Literacy Service Planning

## Literacy Service Planning:

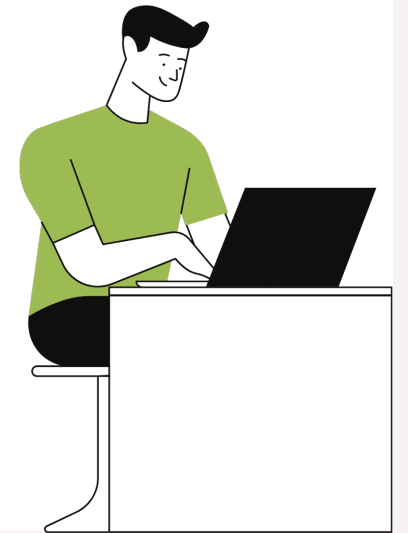
Coordinate and facilitate a local planning and co-ordination process that involves all streams and leads to the development of the literacy services plan

- Establish links to the planning activities of related community programs and services
- Provide **support to the participants** in local planning and co-ordination (help determine planning process, gather and support analysis of key data, provide administrative support, orient new LBS service providers to process)
- Provide **support to the planning process** (includes researching and analyzing the community in terms of its social, economic, cultural, linguistic, and literacy training needs)
- **Support coordination of LBS services** to ensure learners have accurate and timely referrals, portable learner plans, learning achievements described clearly and in a common way and goal path training supporting learners to achieve successful transitions
- **Support the development and implementation of community-wide communication** about the integrated EO system and information and referral tools and processes.

Source: Support Organization Program Guidelines

LMI + LSP =

Effective workplace and workforce regional planning!





# History Lesson

- LSP (then LCPI) started in 1991-1992 – 30 years ago!
- Was more about categorizing and describing LBS programs – identifying gaps and duplication. ...
- What is LSP now? (How) has it evolved?





# MLTSD Expectation

That LBS programs (and support  
orgs) use LMI to plan and deliver  
services

# Purpose of Today's Webinar

- Use of client data and Workforce trend data
- Sources of LMI - Local Jobs Hub (and how it can be used by LBS)
- What can LBS (support orgs) provide to Planning Boards? Data? Responses?
- Where the rubber meets the road – what are some examples of what impact integrating LMI into LSP had? Connecting the dots – LSP, LMI and business planning
- What's the role of LBS programs in all of this?



## Poll

---

Do you think you currently integrate LMI effectively into LSP/business planning?

---

*Yes*

---

*No*

---

*It's a work in progress*

---



# Data

- Use of client data and workforce trend data
- Audience: any other types of data?



# Sources of LMI

- Sources of labour market information (LMI)
- Audience: any other sources of LMI?



# The LBS/Planning Board Connection

- How both organizations can work together to share LMI
- Audience: Any other examples of LBS/Planning Board Connections?



# Integrating LMI into LSP



- Integrating LMI into Literacy Service Planning
- Audience: Any other examples of integrating LMI into LSP?



# The Role for LBS Programs

Any other examples of the role for LBS programs?



## Poll

---

Has this webinar provided you with new ideas for how to integrate LMI into LSP?

---

*Yes*

---

*No*

---

*I'm processing...*

---



# Evaluation

- <https://tinyurl.com/2nmdny46>



## Webinars in This Series

Take the Pulse on Workforce Workplace Literacy: October 17, 2021

What's Your Stake in Workplace and Workforce Literacy? November 18<sup>th</sup> 2:00 pm – 3:30 pm

Integrating Labour Market Information into Literacy Service Planning: January 20<sup>th</sup> 2:00 pm – 3:30 pm

Workforce Planning Boards and Regional Literacy Networks: February 17<sup>th</sup> 2:00 pm – 3:30 pm

<https://e-channel.ca/practitioners/lbs-workforce-workplace-resources>

A stylized green line art illustration of a person wearing a suit jacket, a collared shirt, and glasses. The person is holding a pen in their right hand, which is positioned near the text. The background is white with a large green semi-transparent rectangle on the left side.

# Thank you

Any questions?